



INNOVATION MEANS MOVING FORWARD

Hi-Tech made in Italy



R&R
systems

Information Tech all-around

R&R systems

R&R Systems has twenty years of experience in firmware & software development and, thanks to its deep knowledge of the IT field, is able to support companies by:

- 1 Designing and producing microprocessor-based **electronic equipment** and related firmware development;
- 2 Designing **firmwares** for third parties.

Thanks to the collaboration with highly skilled professionals, this customer-centric company is able to provide tailor-made projects and plans. Punctuality and cutting-edge technologies are two of many added values that the company guarantees to its customers.



The Receiver

FMLan



FMLan is a **FM stereo receiver** for remote listening and monitoring of frequencies precodified from user. The system is composed by a receiver and a software resident on a client PC (or smartphone, or tablet) that allows interaction. It can be physically situated in a remote location.

The client software is available for:

- Windows;
- Apple iOS;
- Android with 4.4 version or higher.

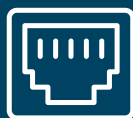
The audio quality can be configured and changed at every connection, allowing hearing also with limited bitrates available.



For the installation and proper operation, FMLan needs:



230 VAC
mains power
(power supply included)



RJ45 cable
connected in a TCP/IP
public network



External antenna:
dipole, directional
or log-periodic
antenna

The router connected to the public network must allow the port forwarding function. In "monitor mode", a static public connection is NOT necessary. In the LAN, it allows "auto mode" (**DHCP + uPNP**), and also static IP mode.

Command Prompt

```
Prompt dei comandi
C:\Users\Roberto>snmptable -v 2c -c public 192.168.1.252 .1.3.6.1.4.1.90384.1
SNMP table: FMLAN-MIB::AlarmTable

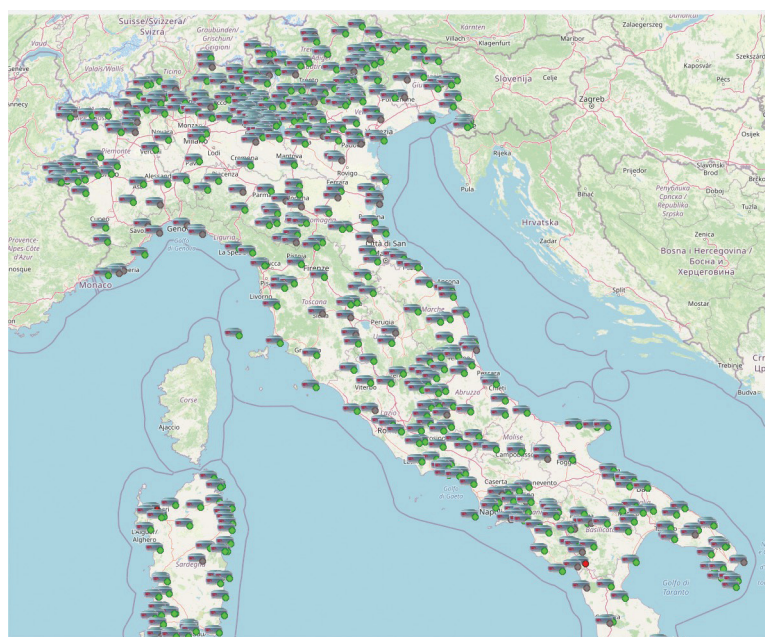
FrequencyColumn PIErrorColumn PilotErrorColumn ModulationErrorColumn PIReadColumn
8750            1                0                0                0
9900            1                0                0                0
10250           1                0                0                0
10251           0                0                0                0

C:\Users\Roberto>
```

FMLan Monitor

FMLan can be used together with **FMLan Monitor**, a software for monitoring and management of map-displayed devices that allows to control several parameters (**PI, PILOT signal presence, modulation presence**) and to notify the respective anomalies on a map and by email, as well as create historic data in the application database.

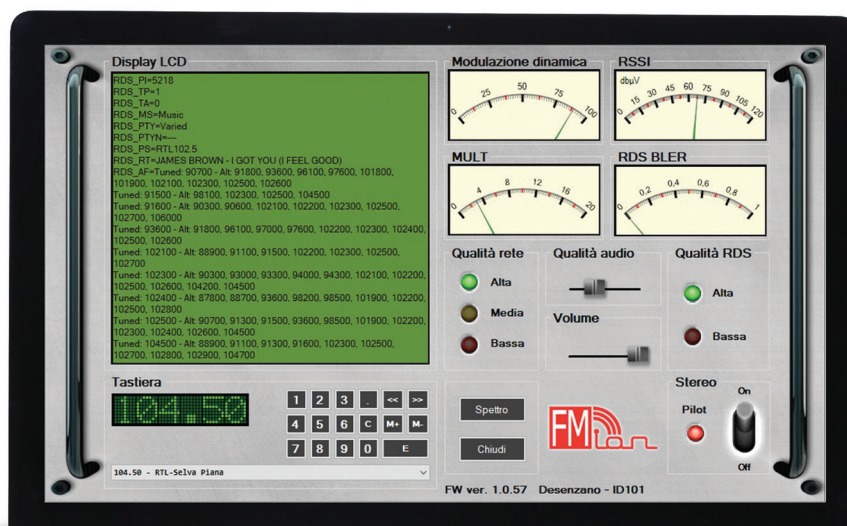
FMLan Monitor and the alarms management can be customized on request.



1.000
UNITS
sold in Italy!
It has proved itself
stable and reliable.

FMLan Scan

FMLan can be used together with **FMLan Scan**, a command line software with for automatic scan, that for the desired channels acquires various parameters (**RSSI, SNR, BLER, PI, PILOT signal presence, modulation presence**), store them in a database and allows to schedule the scan with all general purpose scheduling softwares for PC.



THE DASHBOARD

In **FMLan** can be activated DHCP protocol (for automatic IP address assignment) and uPnP protocol (for automatic creation on the router of the port forwarding rules necessary for his communication).

FMLan contains an SNMP agent and MIB database, for remote queries through SNMP protocol.



R&R systems

via Colombo, 7 - 25020 Dello (BS)

Office +39 030 97 71 047

Mobile +39 347 40 85 743

info@svilupposoftwarebrescia.it

www.svilupposoftwarebrescia.it